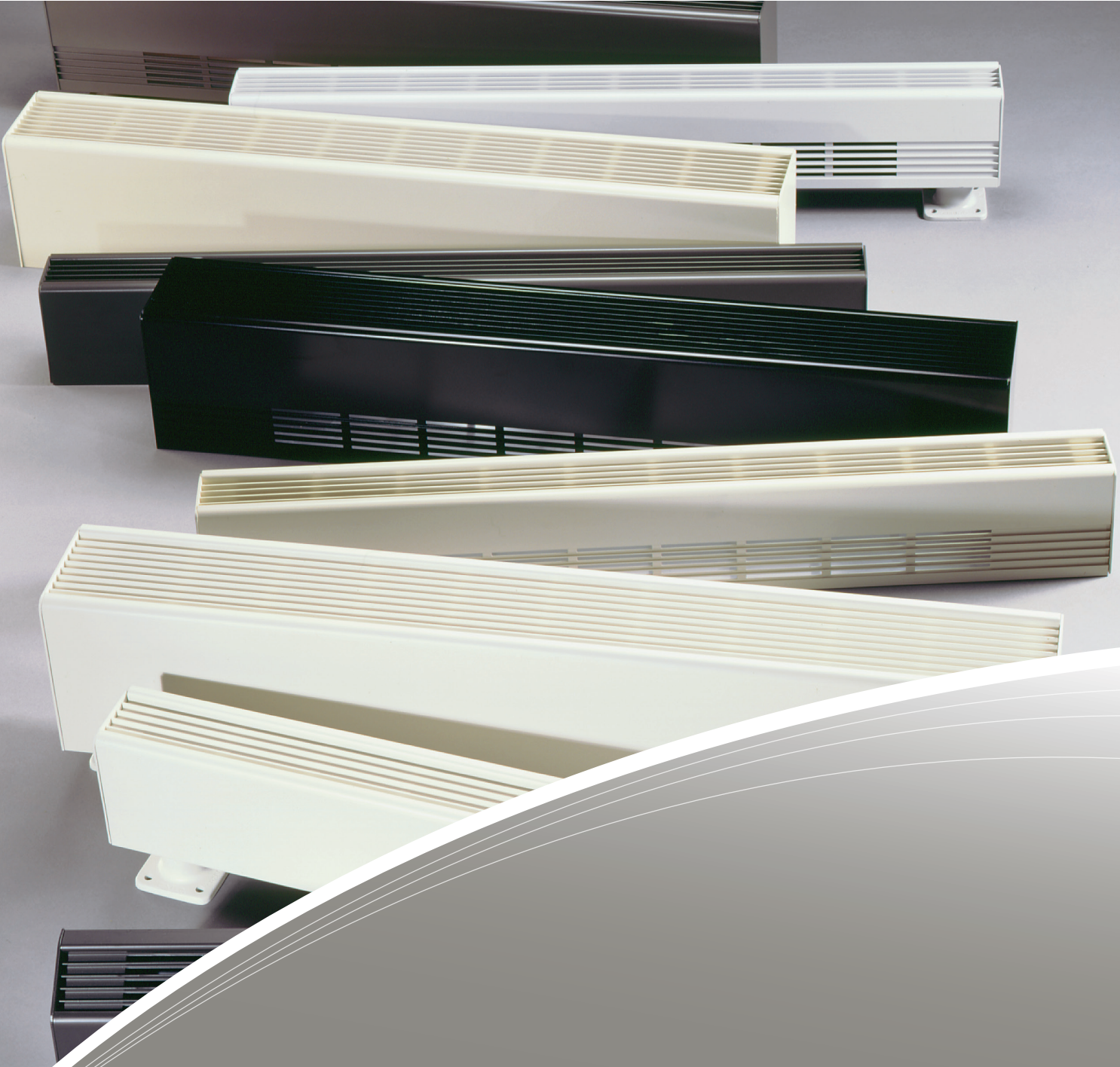


ELECTRIC PRODUCTS

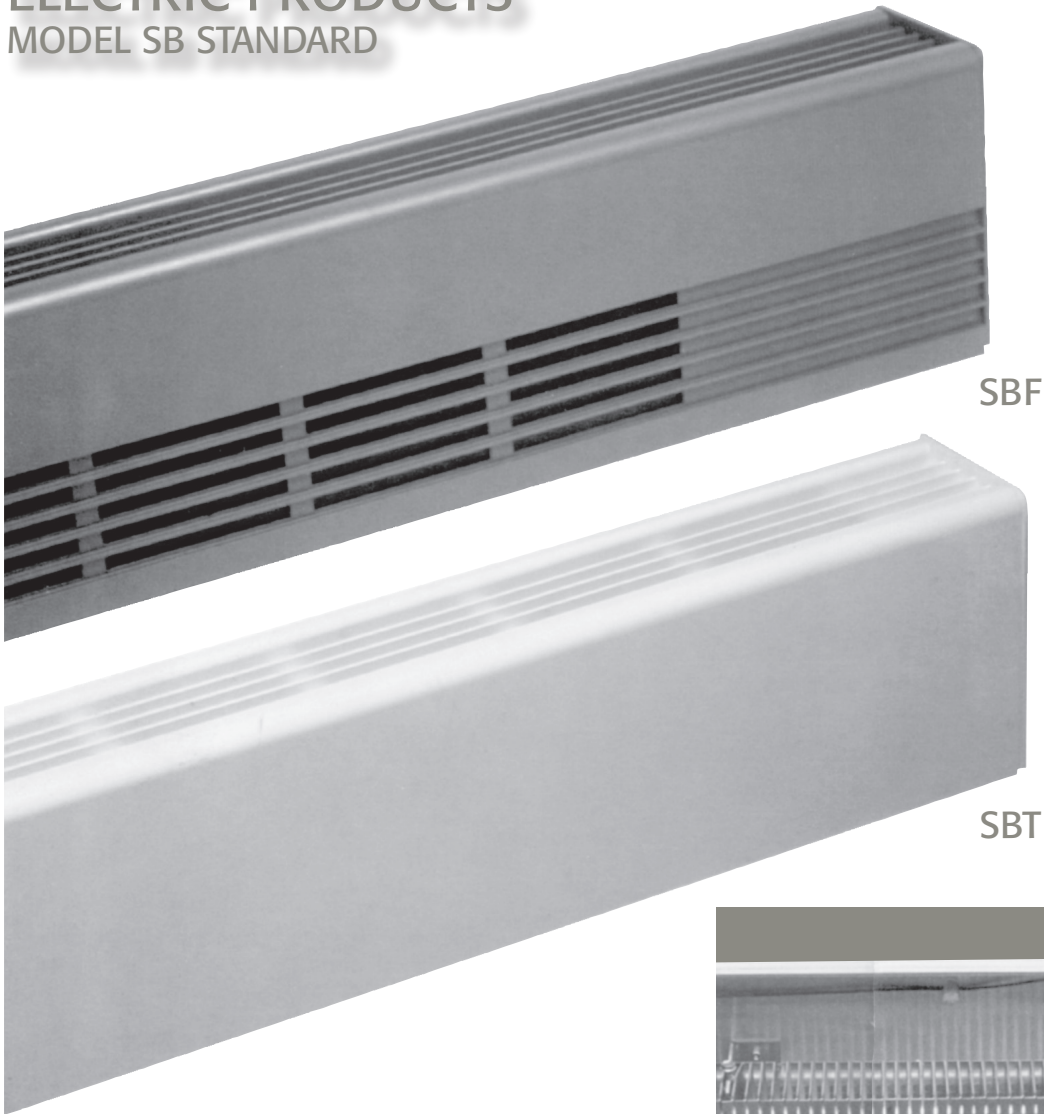


MADE IN THE USA

Vulcan
RADIATOR

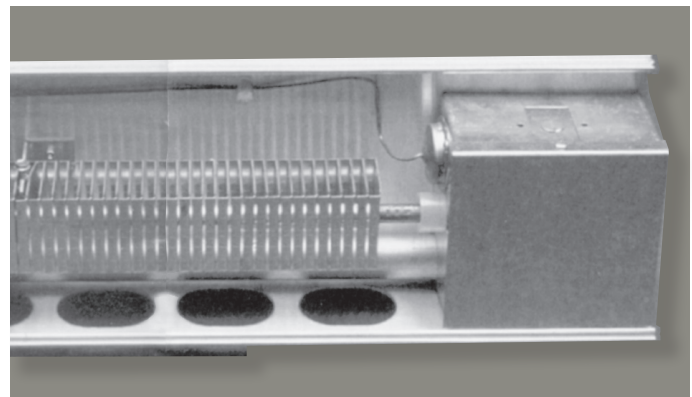
ELECTRIC PRODUCTS

MODEL SB STANDARD



SBF

SBT



SB FEATURES

SBST - Bottom intake, slope discharge

SBSTF - Front intake, slope discharge

SBT - Bottom intake, top discharge

SBF - Front intake, top discharge

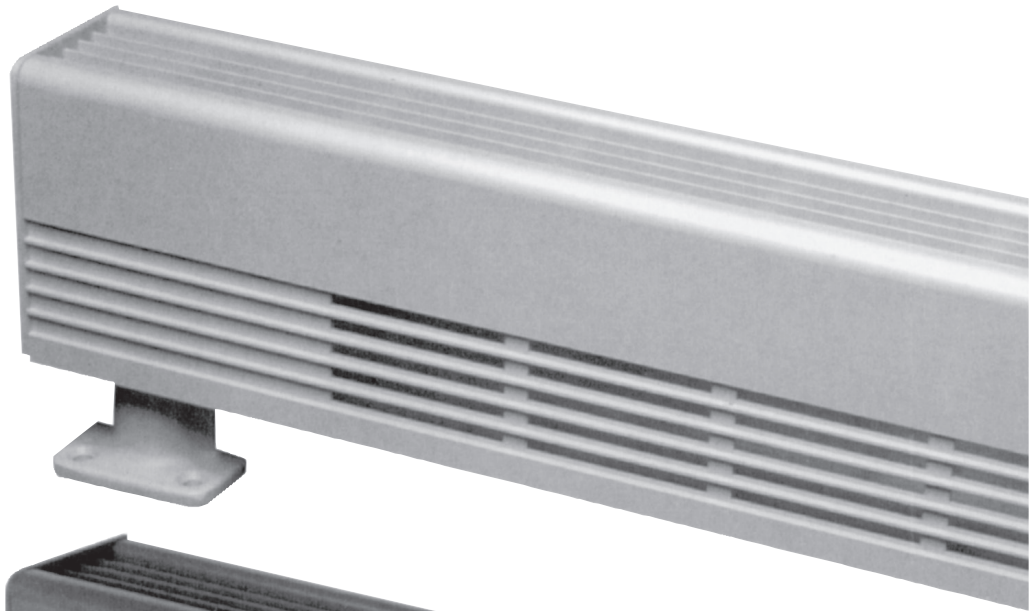
Two piece all aluminum, 14 gauge front and back.

Extended backs and fronts available.

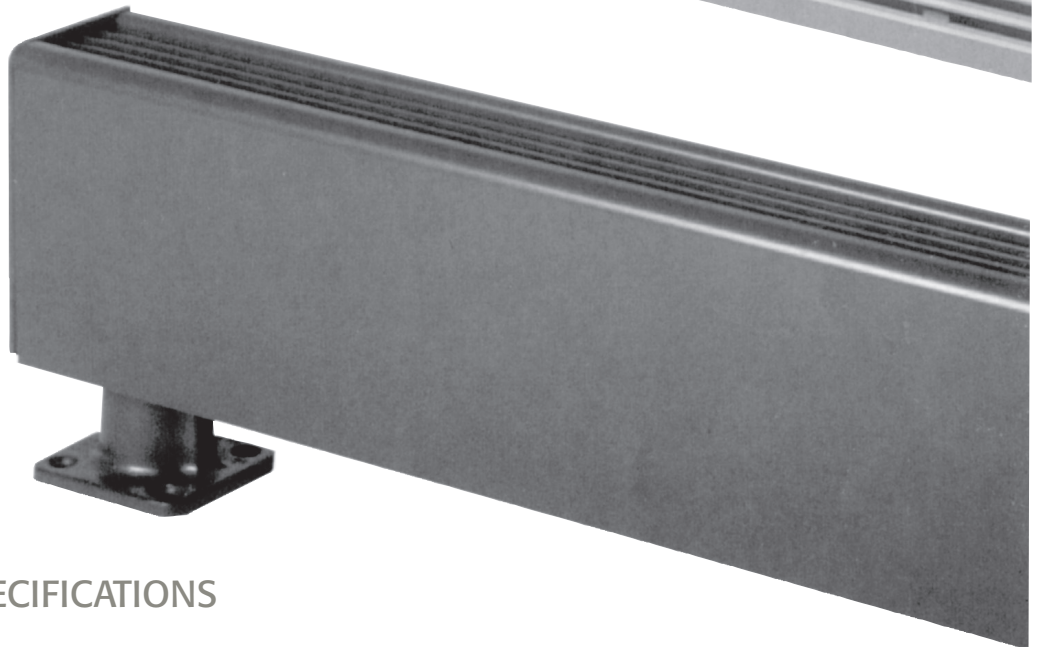
- 4" junction boxes at each end.
- 3/4" EMT raceway standard.
- 1/2" and 3/4" knockouts.
- Control packages available.
- Multiple heater sections on one common back.
- C/UL Listed.
- Full length thermal limit switch.
- There are 8 painted finishes available.

- Custom finishes specified by the architect are available.
 - Available with optional 2" pedestals and finished back.
 - 1/4" pencil proof discharge grill.
 - Accessories include: end caps, walltrims, splice plates, corners and blank sections.
 - Cabinet size is 3"W x 5"H. (3"W x 6"H SBST/F)
 - Available with built in thermostat or disconnect.
 - Wattages from 100 to 250 watts per foot.
- Control sections include 6" or 12" with:
disconnect, thermostat, pneumatic relay, transformer relay,
power relay, fused disconnect or duplex receptacle. Optional
built-in controls shall include thermostats (single and double
pole) and disconnect switches.

SBF-PD



SBT-PD



SB ENGINEERING SPECIFICATIONS

Design Draft Barriers shall be 5" high and 3" wide. The front cover shall be one piece 14 gauge aluminum construction suitable for architectural, Commercial and industrial use, with 1/4" pencil proof top discharge.

The one piece cover shall be extruded aluminum for maximum strength and shall be available in lengths to 15'. The front cover shall snap fit to the 14 gauge back cover with no screw heads or assembly fasteners. The 14 gauge back cover shall be suitable for mullion to mullion mounting.

Standard painted finish shall be provided.

Heat sections from 2' through 10' shall be available. All heaters shall contain a 3/4" EMT built-in raceway with factory wiring 1/2" and 3/4" knockouts shall be provided on the side and rear of the heater junction box to allow end to end wiring. All blank sections shall be fully enclosed to allow branch circuit wiring. All heaters shall contain a full length linear thermal overheat protector with automatic reset. Wattages shall be available from 100 to 250 WPF.

Heating elements shall consist of a steel sheath and mechanically bonded aluminum fins to assure efficient heat transfer. Element fin temperature shall not exceed 350°F to ensure long element life. Element shall be center anchored and free floating at each end on nylon bushings.

Optional controls shall include:

Thermostats (single or double pole) and disconnect switches. Controls shall be tamper-proof and adjustable with a blade screwdriver through the discharge grill.

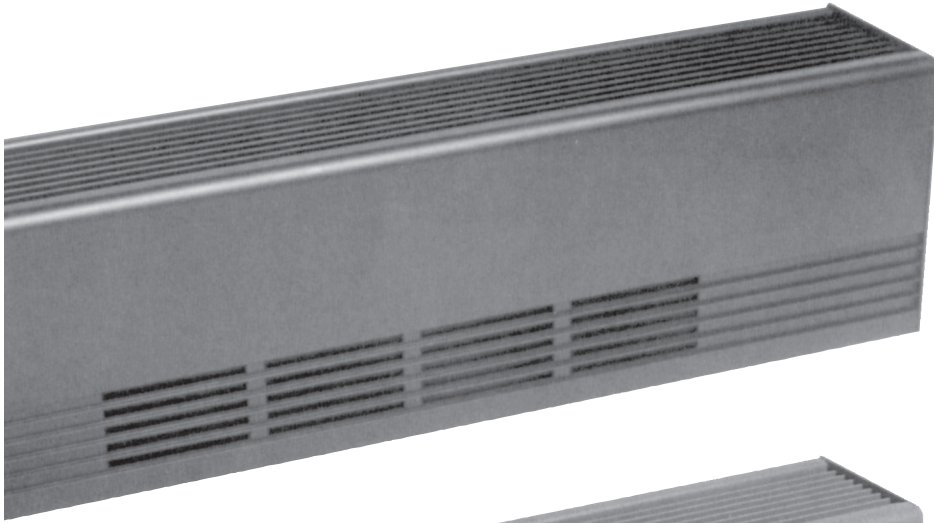
Optional control sections – see page 6.

Accessories – see page 6.

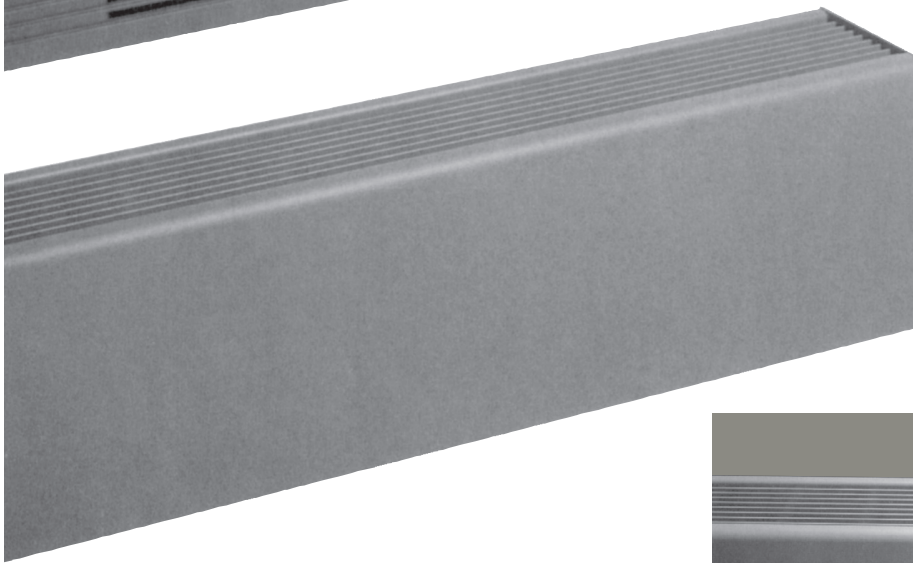
All heaters are labeled by Underwriters' Laboratories, Inc.

ELECTRIC PRODUCTS

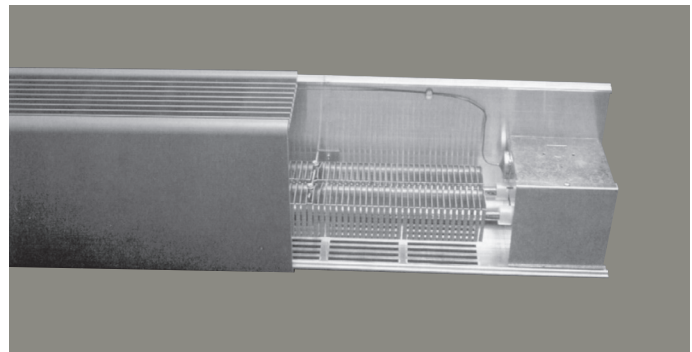
MODEL LB STANDARD



LBF



LBT



LB FEATURES

LBT - Bottom intake, top discharge

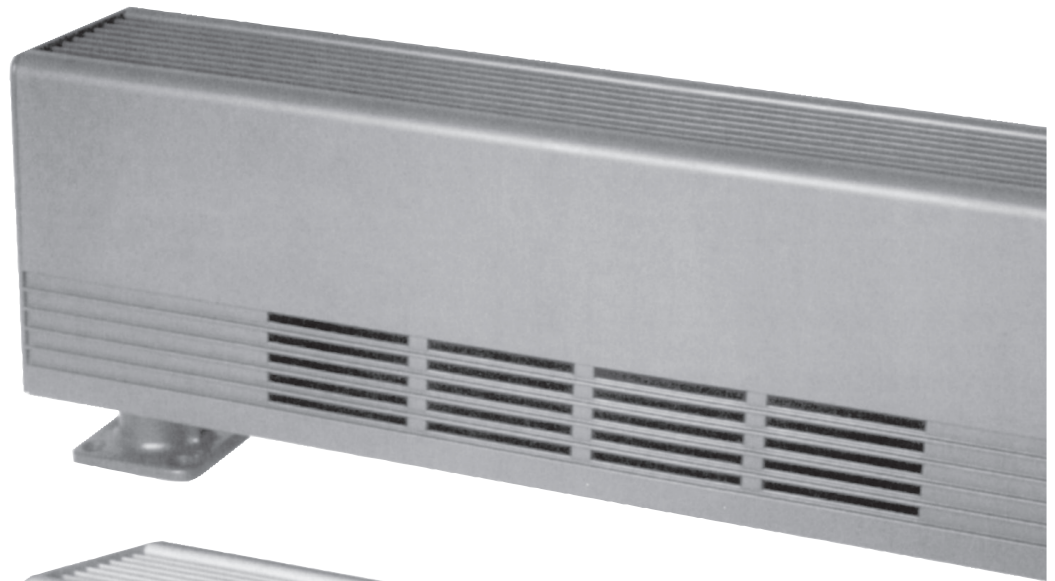
LBF - Front intake, top discharge

Two piece all aluminum, 12 gauge front and back.

- Extended backs and fronts available.
- 4" junction boxes at each end.
- 3/4" EMT raceway standard.
- 1/2" and 3/4" knockouts.
- Control packages available.
- Multiple heater sections on one common back.
- C/UL Listed.
- Full length thermal limit switch.
- There are 8 painted finishes available.
- Custom finishes specified by the architect are available.

- Available with optional 2" pedestals and finished back.
- 1/4" pencil proof discharge grill.
- Accessories include: end caps, walltrims, splice plates, corners and blank sections.
- Cabinet size is 5"W x 7"H.
- Available with built in thermostat or disconnect.
- Wattages from 100 to 500 watts per foot.
Control sections include 6" or 12" with:
disconnect, thermostat, pneumatic relay, transformer relay, relay, fused disconnect or duplex receptacle. Optional built-in controls shall include thermostats (single and double pole) and disconnect switches.

LBF-PD



LBT-PD



LB ENGINEERING SPECIFICATIONS

Design Draft Barriers shall be 7" high and 5" wide. The front cover shall be one piece 12 gauge aluminum construction suitable for architectural, Commercial and industrial use, with 1/4" pencil proof top discharge.

The one piece cover shall be extruded aluminum for maximum strength and shall be available in lengths to 12'. The front cover shall snap fit to the 12 gauge back cover with no screw heads or assembly fasteners. The 12 gauge back cover shall be suitable for mullion to mullion mounting.

Standard painted finish shall be provided.

Heat sections from 2' through 10' shall be available. All heaters shall contain a 3/4" EMT built-in raceway with factory wiring 1/2" and 3/4" knockouts shall be provided on the side and rear of the heater junction box to allow end to end wiring. All blank sections shall be fully enclosed to allow branch circuit wiring. All heaters shall contain a full length linear thermal overheat protector with automatic reset. Wattages shall be available from 100 to 500 WPF.

Heating elements shall consist of a steel sheath and mechanically bonded aluminum fins to assure efficient heat transfer. Element fin temperature shall not exceed 350°F to ensure long element life. Element shall be center anchored and free floating at each end on nylon bushings.

Optional controls shall include:

Thermostats (single or double pole) and disconnect switches. Controls shall be tamper-proof and adjustable with a blade screwdriver through the discharge grill.

Optional control sections – see page 7.

Accessories – see page 7.

All heaters are labeled by Underwriters' Laboratories, Inc.

SB ACCESSORIES

DUE TO THE SIZE OF THE CABINET, CONTROLS OTHER THAN THERMOSTATS AND DISCONNECTS MUST BE MOUNTED IN A CONTROL SECTION. SEE BELOW.

CONTROL SECTIONS:

12" Control Sections:

12" long and can be attached to the enclosure. Contains 1, 2, or 3 items. right or left side mounting. (6" CS for 1 or 2 items).

TRANSFORMER RELAY:

Single pole, rated 25 amp 120 - 277 volt. Contact rated up to 277 volt (specify). Coils are 24 to 277 volt (specify).

POWER RELAY, CONTACTORS, PE RELAYS, MERCURY RELAY:

Single or double pole (specify). 20 amp rated 120 - 277 volt. Low or line volts coils (specify).

DUPLEX RECEPTACLE:

Mounted on front cover. 15 amp rated 120 volt.

FUSED DISCONNECT:

Fuse block with 20 amp fuse and disconnect switch.

THERMOSTATS:

Single or double pole rated 25 amp 120 - 277 volt adjustable through discharge grill.

DISCONNECT SWITCH:

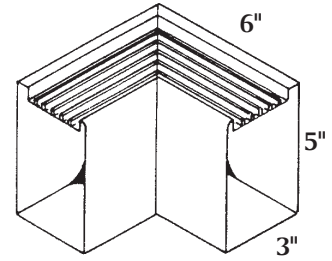
Double pole rated 20 amp 120 - 277 volt.

ACCESSORIES

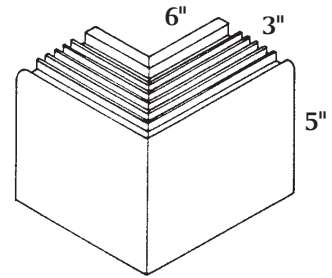
* CAT NO.	DESCRIPTION
SB-WT	Wall Trim (specify 4" or 6")
SB-SP	Splice Plate
SB-EC	End Cap (specify right or left)
SB-IC	Inside Corner (specify miter degree)
SB-OC	Outside Corner (specify miter degree)
SB-BS	Blank Section (specify length 6" - 15')
SBT	Bottom Intake, Top Discharge
SBF	Front Intake, Top Discharge

CATALOG NUMBER	WATTAGE		BTU/HR	LENGTH
	NOMINAL	TOTAL		
SB-2150	150	300	1023	2'
SB-2200	200	400	1364	
SB-2250	250	500	1706	
SB-3100	100	300	1032	3'
SB-3125	125	375	1280	
SB-3150	150	450	1535	
SB-3200	200	600	2406	
SB-3250	250	750	2560	
SB-4100	100	400	1364	4'
SB-4125	125	500	1706	
SB-4150	150	600	2046	
SB-4200	200	800	2728	
SB-4250	250	1000	3414	
SB-5100	100	500	1706	5'
SB-5125	125	625	2130	
SB-5150	150	750	2560	
SB-5200	200	1000	3414	
SB-5250	250	1250	4266	
SB-6100	100	600	2046	6'
SB-6125	125	750	2560	
SB-6150	150	900	3069	
SB-6200	200	1200	4092	
SB-6250	250	1500	5120	
SB-7100	100	700	2387	7'
SB-7125	125	875	2986	
SB-7150	150	1050	3581	
SB-7200	200	1400	4774	
SB-7250	250	1750	5973	
SB-8100	100	800	2728	8'
SB-8125	125	1000	3413	
SB-8150	150	1200	4092	
SB-8200	200	1600	5456	
SB-8250	250	2000	6826	
SB-9100	100	900	3071	9'
SB-9125	125	1125	3840	
SB-9150	150	1350	4606	
SB-9200	200	1800	6141	
SB-9250	250	2250	7678	
SB-10100	100	1000	3413	10'
SB-10125	125	1250	4266	
SB-10150	150	1500	5120	
SB-10200	200	2000	6826	
SB-10250	250	2500	8532	

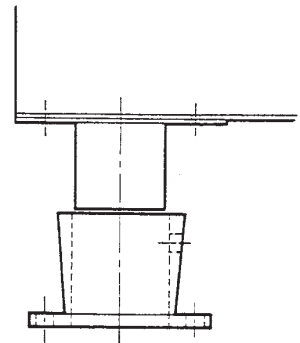
NOTE: Consult factory for 120 volt applications.



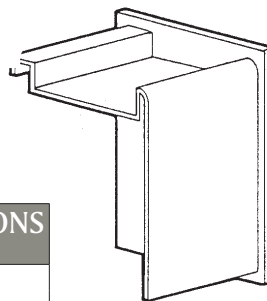
INSIDE CORNER



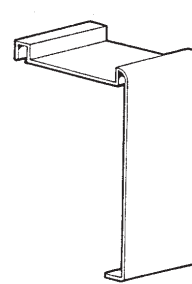
OUTSIDE CORNER



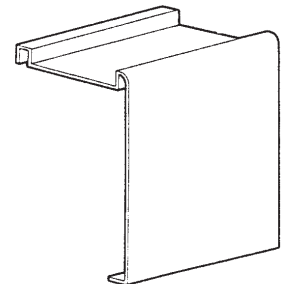
CAST PEDESTAL



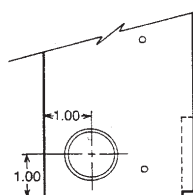
END CAP



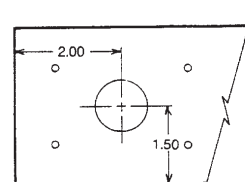
SPLICE PLATE



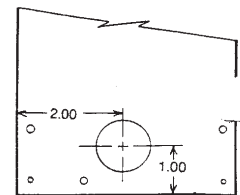
WALL TRIM



SIDE VIEW



BOTTOM VIEW
Pedestal Unit Only



BACK VIEW

ACCESSORIES

DESCRIPTION	SERIES SBT OR SBF CATALOG NUMBER	DIMENSIONS D/H/L
BLANKS	SBT or SBF 100BS	3"x5"x1'
	SBT or SBF 200BS	3"x5"x2'
	SBT or SBF 300BS	3"x5"x3'
	SBT or SBF 400BS	3"x5"x4'
	SBT or SBF 500BS	3"x5"x5'
	SBT or SBF 600BS	3"x5"x6'
	SBT or SBF 700BS	3"x5"x7'
	SBT or SBF 800BS	3"x5"x8'
	SBT or SBF 900BS	3"x5"x9'
	SBT or SBF 1000BS	3"x5"x10'
	Wall Trim	SBT or SBF - WT
Splice Plate	SBT or SBF - SP	2"
Inside Corner	SBT or SBF - IC - 90°	
Outside Corner	SBT or SBF - OC - 90°	
End Caps	SBT or SBF - EC	

NOTE: Use suffix SBST for Slope Models.

LB ACCESSORIES

DUE TO THE SIZE OF THE CABINET,
CONTROLS OTHER THAN THERMOSTATS
AND DISCONNECTS MUST BE MOUNTED IN A
CONTROL SECTION. SEE BELOW.

CONTROL SECTIONS:

12" Control Sections:

12" long and can be attached to the enclosure. Contains 1, 2, or 3 items. right or left side mounting. (6" CS for 1 or 2 items).

TRANSFORMER RELAY:

Single pole, rated 25 amp 120 - 277 volt.
Contact rated up to 277 volt (specify). Coils are 24 to 277 volt (specify).

POWER RELAY, CONTACTORS, PE RELAYS, MERCURY RELAY:

Single or double pole (specify). 20 amp rated 120 - 277 volt. Low or line volts coils (specify).

DUPLEX RECEPTACLE:

Mounted on front cover. 15 amp rated 120 volt.

FUSED DISCONNECT:

Fuse block with 20 amp fuse and disconnect switch.

THERMOSTATS:

Single or double pole rated 25 amp 120 - 277 volt adjustable through discharge grill.

DISCONNECT SWITCH:

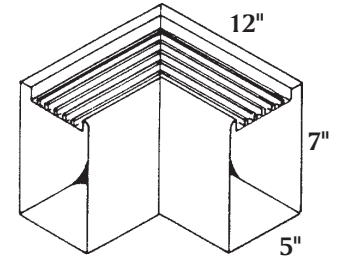
Double pole rated 20 amp 120 - 277 volt.

ACCESSORIES

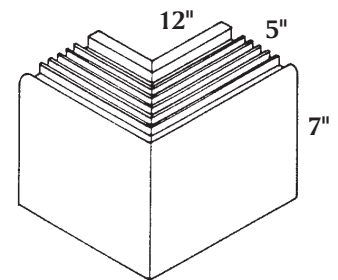
* CAT NO.	DESCRIPTION
LB-WT	Wall Trim (specify 4" or 6")
LB-SP	Splice Plate
LB-EC	End Cap (specify right or left)
LB-IC	Inside Corner (specify miter degree)
LB-OC	Outside Corner (specify miter degree)
LB-BS	Blank Section (specify length 6" - 15')
LBT	Bottom Intake, Top Discharge
LBF	Front Intake, Top Discharge

CATALOG NUMBER	WATTAGE		BTU/HR	LENGTH
	NOMINAL	TOTAL		
LB-2150	150	300	1023	2'
LB-2188	188	376	1275	2'
LB-2200	200	400	1364	2'
LB-2250	250	500	1706	2'
LB-2350	350	700	2387	2'
LB-2375	375	750	2550	2'
LB-2500	500	1000	3410	2'
LB-3100	100	300	1023	3'
LB-3125	125	375	1280	3'
LB-3150	150	450	1535	3'
LB-3188	188	564	1914	3'
LB-3200	200	600	2406	3'
LB-3250	250	750	2560	3'
LB-3350	350	1050	3580	3'
LB-3375	375	1125	3828	3'
LB-3500	500	1500	5720	3'
LB-4100	100	400	1364	4'
LB-4125	125	500	1706	4'
LB-4150	150	600	2046	4'
LB-4188	188	752	2550	4'
LB-4200	200	800	2728	4'
LB-4250	250	1000	3414	4'
LB-4350	350	1400	4774	4'
LB-4375	375	1500	5100	4'
LB-4500	500	2000	6826	4'
LB-5100	100	500	1706	5'
LB-5125	125	625	2130	5'
LB-5150	150	750	2560	5'
LB-5188	188	940	3189	5'
LB-5250	200	1000	3414	5'
LB-5250	250	1250	4266	5'
LB-5350	350	1750	5973	5'
LB-5375	375	1875	6378	5'
LB-5500	500	2500	8532	5'
LB-6100	100	600	2046	6'
LB-6125	125	750	2560	6'
LB-6150	150	900	3069	6'
LB-6188	188	1128	3825	6'
LB-6200	200	1200	4092	6'
LB-6250	250	1500	5120	6'
LB-6350	350	2100	7161	6'
LB-6375	375	2275	7650	6'
LB-6500	500	3000	10230	6'
LB-7100	100	700	2387	7'
LB-7125	125	875	2966	7'
LB-7150	150	1050	3581	7'
LB-7188	188	1316	4464	7'
LB-7200	200	1400	4774	7'
LB-7250	250	1750	5973	7'
LB-7350	350	2450	8354	7'
LB-7375	375	2625	8928	7'
LB-7500	500	3500	11935	7'
LB-8100	100	800	2728	8'
LB-8125	125	1000	3413	8'
LB-8150	150	1200	4092	8'
LB-8188	188	1504	5100	8'
LB-8200	200	1600	5456	8'
LB-8250	250	2000	6826	8'
LB-8350	350	2800	9548	8'
LB-8375	375	3000	10200	8'
LB-8500	500	4000	13640	8'
LB-9100	100	900	3071	9'
LB-9125	125	1125	3840	9'
LB-9150	150	1350	4656	9'
LB-9188	188	1692	5758	9'
LB-9200	200	1800	6141	9'
LB-9250	250	2250	7678	9'
LB-9350	350	3150	10741	9'
LB-9375	375	3375	11516	9'
LB-9500	500	4500	15345	9'
LB-10100	100	1000	3413	10'
LB-10125	125	1250	4266	10'
LB-10150	150	1500	5120	10'
LB-10188	188	1880	6375	10'
LB-10200	200	2000	6826	10'
LB-10250	250	2500	8532	10'
LB-10350	350	3500	11935	10'
LB-10375	375	3750	12750	10'
LB-10500	500	5000	17050	10'

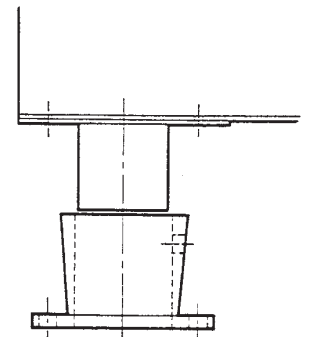
NOTE: Consult factory for 120 volt applications.



INSIDE CORNER



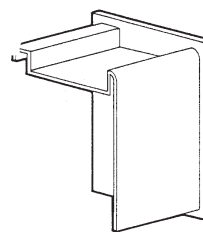
OUTSIDE CORNER



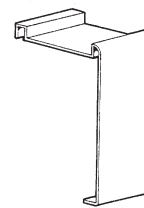
CAST PEDESTAL

ACCESSORIES

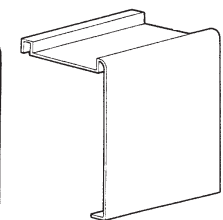
DESCRIPTION	SERIES LBT OR LBF CATALOG NUMBER	DIMENSIONS D/H/L
BLANKS	LBT or LBF 100BS	5"x7"x1'
	LBT or LBF 200BS	5"x7"x2'
	LBT or LBF 300BS	5"x7"x3'
	LBT or LBF 400BS	5"x7"x4'
	LBT or LBF 500BS	5"x7"x5'
	LBT or LBF 600BS	5"x7"x6'
	LBT or LBF 700BS	5"x7"x7'
	LBT or LBF 800BS	5"x7"x8'
	LBT or LBF 900BS	5"x7"x9'
	LBT or LBF 1000BS	5"x7"x10'
Wall Trim	LBT or LBF - WT	4" or 6"
Splice Plate	LBT or LBF - SP	2"
Inside Corner	LBT or LBF - IC - 90°	
Outside Corner	LBT or LBF - OC - 90°	
End Caps	LBT or LBF - EC	



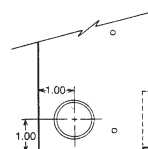
END CAP



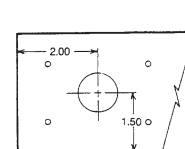
SPLICE PLATE



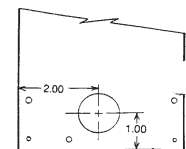
WALL TRIM



SIDE VIEW



BOTTOM VIEW



BACK VIEW

Pedestal Unit Only

ELECTRIC PRODUCTS

COLOR CHART PAINTED FINISHES

